

# Dies Irae

Editor: John Henry Fowler

Revision: 2-25-2006

1 Men: 2

Dĭ - es i - rāe, di - ēs il - la, Sōl - vet saē - clum in fa - vil - la:

3 4 Women:

Tēs - te Dā - vid cum Si - bŷl - la. (Ah) Quān - tus trē - mor est fu - tū - rus,

5 6

Quan - do jū - dex est ven - tū - rus, Cūn - cta stric - te di - scus - sū - rus !

7 8

Tū - ba mī - rum spār - gens sō - num, Per se - pūl - cra re - gi - ō - num,

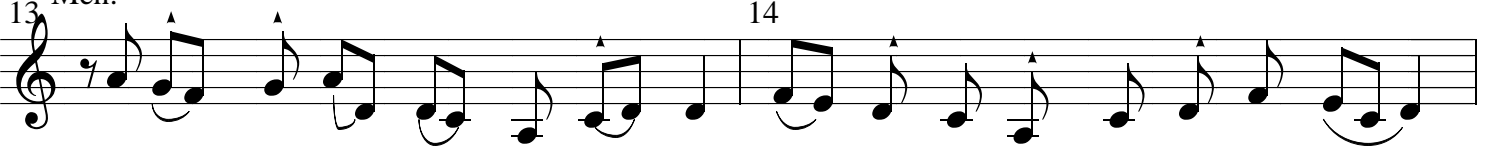
9 10

Cō - get ōm - nes — an - te thrō - num. Mors stu - pē - bit et na - tū - ra, —

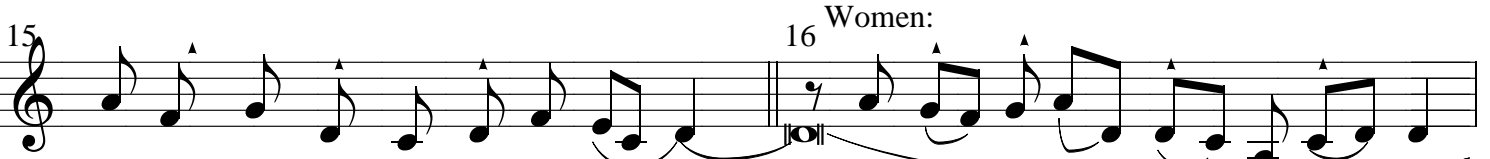
11 12

Cum re - sūr - get cre - a - tū - ra, Ju - di - cān - ti — res - pon - sū - ra.

13 Men:



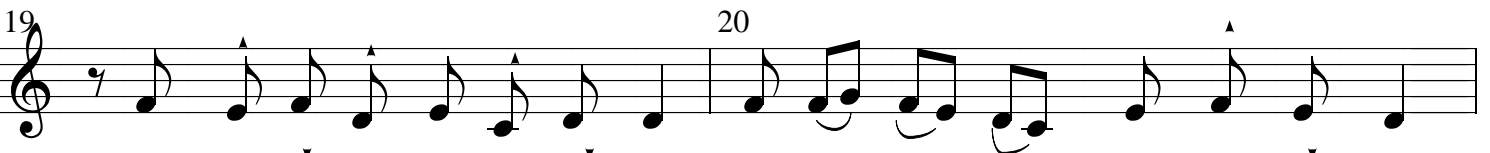
Li-ber scri-ptus pro fe-re - tur, In quo to - tum con - ti - nen - tur,



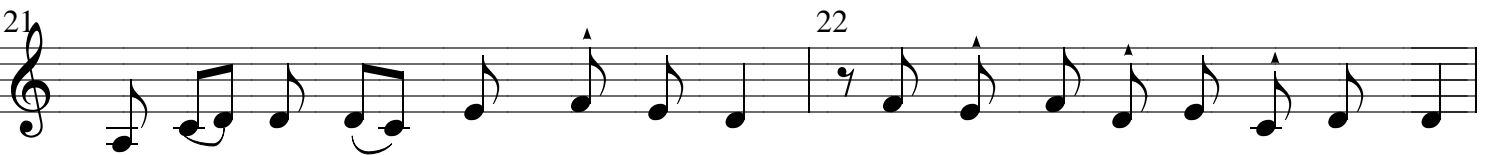
Un - de mūn - dus ju - di - cē - tur. (Ah) Jū - dex er - go cum se - dē - bit,



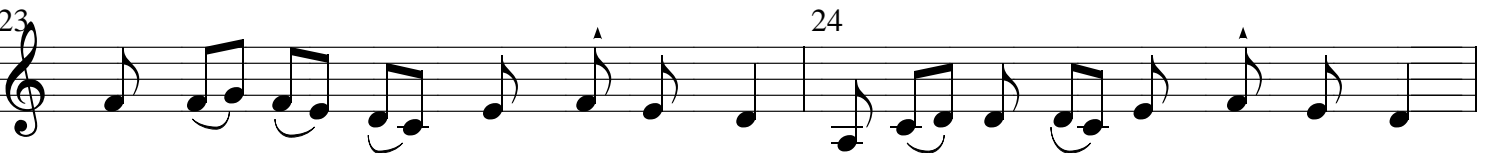
Quid - quid lā - tet ap - par - rē - bit: Nil in - ūl - tum re - ma - nē - bit.



Qui Ma - ri - am ab - sol - vī - sti, Et la - trō - nem ex - au - dī - sti,



Mi - hi quo - que spem de - dī - sti. Prē - ces mē - ae non sunt dig - nae :



Sed tu bō - nus fac be - nīg - ne, Ne per - ěn - ni crē - mer īg - ne.



In - ter ō - ves lō - cum praē - sta, Et ab haē - dis me se - quēs - tra,

27 28

Musical notation for measures 27 and 28, featuring a treble clef, a 7/8 time signature, and various rhythmic values including eighth and sixteenth notes, with some notes beamed together.

Stă - tu - ens in păr - te dēx - tra Con - fu - tă - tis ma - le - di - tus

29 30

Musical notation for measures 29 and 30, continuing the melody with similar rhythmic patterns and some rests.

Flă - mis ác - ri - bus ad - dic - tus Vö - ca me cum be - ne - di - ctus

31 32

Musical notation for measures 31 and 32, showing a continuation of the melodic line with some phrasing slurs.

O - ro sùp - plex et ac - cli - nis, Cor con - tri - tum qua - si ci - nis :

33 34

Musical notation for measures 33 and 34, featuring a mix of eighth and sixteenth notes.

Gě - re cù - ram mē - i fi - nis La - cri - mō - sa di - es il - la,

35 36

Musical notation for measures 35 and 36, including a measure with a whole rest in measure 35.

Qua re - sùr - get ex \_\_\_\_\_ fa - vi - la. Ju - di - cān - dus ho - mo - rē - us :

37 38

Musical notation for measures 37 and 38, showing a melodic line with some phrasing slurs.

Hũ - ic er - go păr - - ce Dē - us. Pi - e Jē - su Dò - mi - ne,

39 40

Musical notation for measures 39 and 40, ending with a double bar line.

Dò - na ě - is rē - qui - em. A - - - men. \_\_\_\_\_